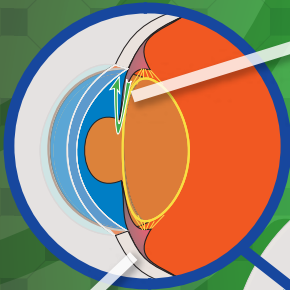
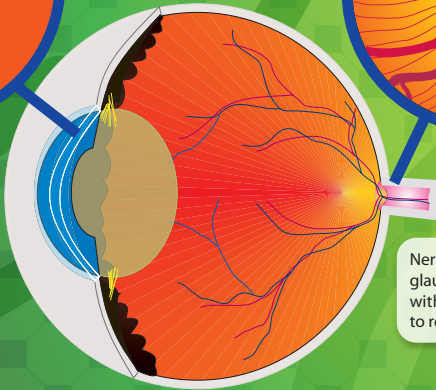


**G**laucoma is accelerated, progressive death of the nerve fibers leading eventually to blindness. This usually occurs in the presence of elevated eye pressures such as when the exit of aqueous fluid is impeded by anything blocking the angle or reducing access to the canal. Glaucoma therapy is aimed at reducing eye pressure.



The Aqueous Fluid must flow over the lens and onto the cornea through a canal at the angle formed by the cornea and base of the iris. Resistance to its flow will cause the eye pressure to increase.

Aqueous fluid, which provides nutrition to the lens and cornea is constantly produced by the Ciliary Body and is responsible for the internal eye pressure.



Nerve fibers die and diminish in glaucoma at an accelerated rate with high eye pressure leading to reduced field of vision.

**G**laucoma is accelerated, progressive death of the nerve fibers leading eventually to blindness. This usually occurs in the presence of elevated eye pressures such as when the exit of aqueous fluid is impeded by anything blocking the angle or reducing access to the canal. Glaucoma therapy is aimed at reducing eye pressure.

